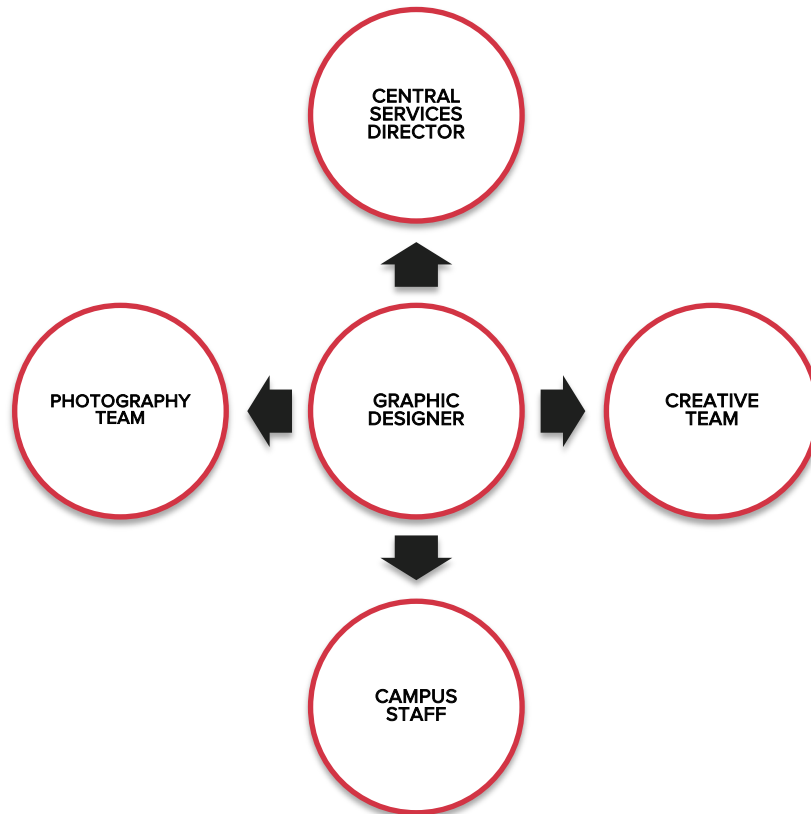


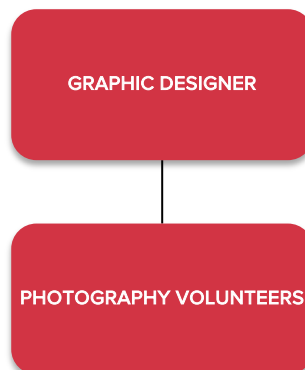
GRAPHIC DESIGNER (CENTRAL)

Produces high-quality graphics & animations to more effectively reach others.

WHO DO YOU IMPACT?



WHO DO YOU LEAD?



WHY IS YOUR ROLE IMPORTANT?

| | | |
|--|---------------------------|--|
| | CENTRAL SERVICES DIRECTOR | <ul style="list-style-type: none"> • Serves the Central Services Director by following his vision and direction. • Assists the Central Services Director by providing graphics and photography to use for marketing and communication. |
| | CREATIVE TEAM | <ul style="list-style-type: none"> • Serves the Creative Team by providing graphics and photography for them to use. • Serves them by bringing creative thoughts and ideas to the weekly meeting. |
| | CAMPUS STAFF | <ul style="list-style-type: none"> • Serves the campus staff by providing resources for central events, ministries, etc. • Helps the campus staff focus their time on ministering to others in their communities. |
| | PHOTOGRAPHY TEAM | <ul style="list-style-type: none"> • Leads the photography team for weekend and central events. • Serves them by providing training and instruction, and by creating a fun environment to serve. |
| | | |

WHAT ARE YOUR RESPONSIBILITIES AND EXPECTATIONS?

(The Graphic Designer position is a part-time role requiring 40-45 hours per week. You must be submitted to the vision of the lead pastor through the direction of your supervisor. This document outlines the primary responsibilities for this position, but miscellaneous duties may also be assigned by your supervisor.)

